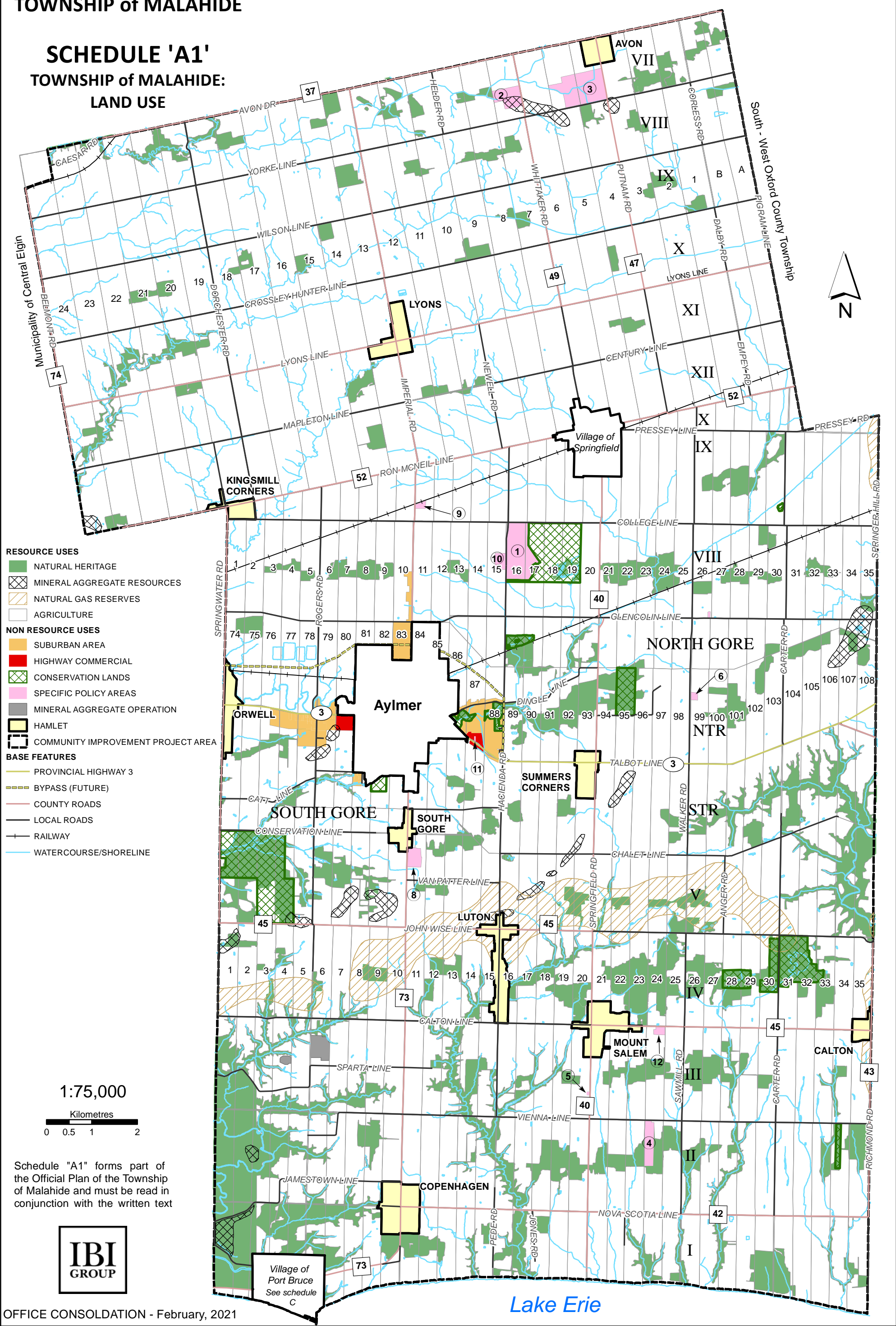


OFFICIAL PLAN OF THE TOWNSHIP of MALAHIDE

SCHEDULE 'A1' TOWNSHIP of MALAHIDE: LAND USE



- RESOURCE USES**
- NATURAL HERITAGE
 - MINERAL AGGREGATE RESOURCES
 - NATURAL GAS RESERVES
 - AGRICULTURE
- NON RESOURCE USES**
- SUBURBAN AREA
 - HIGHWAY COMMERCIAL
 - CONSERVATION LANDS
 - SPECIFIC POLICY AREAS
 - MINERAL AGGREGATE OPERATION
 - HAMLET
 - COMMUNITY IMPROVEMENT PROJECT AREA
- BASE FEATURES**
- PROVINCIAL HIGHWAY 3
 - BYPASS (FUTURE)
 - COUNTY ROADS
 - LOCAL ROADS
 - RAILWAY
 - WATERCOURSE/SHORELINE

1:75,000

Kilometres

0 0.5 1 2

Schedule "A1" forms part of the Official Plan of the Township of Malahide and must be read in conjunction with the written text



Village of Port Bruce
See schedule C

Lake Erie