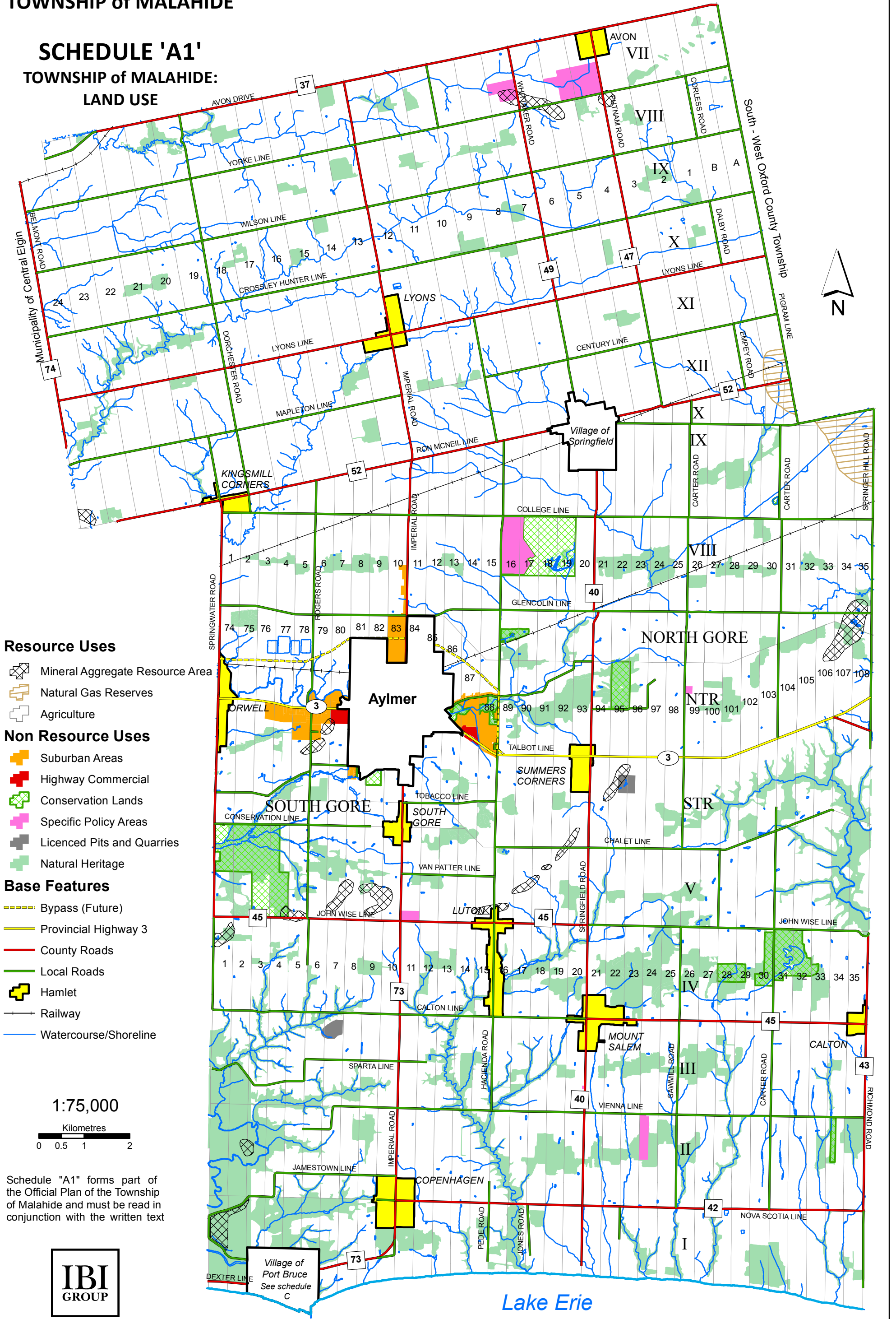


OFFICIAL PLAN OF THE TOWNSHIP of MALAHIDE

SCHEDULE 'A1' TOWNSHIP of MALAHIDE: LAND USE



Resource Uses

- Mineral Aggregate Resource Area
- Natural Gas Reserves
- Agriculture

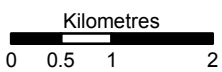
Non Resource Uses

- Suburban Areas
- Highway Commercial
- Conservation Lands
- Specific Policy Areas
- Licenced Pits and Quarries
- Natural Heritage

Base Features

- Bypass (Future)
- Provincial Highway 3
- County Roads
- Local Roads
- Hamlet
- Railway
- Watercourse/Shoreline

1:75,000



Schedule "A1" forms part of the Official Plan of the Township of Malahide and must be read in conjunction with the written text



Village of Port Bruce
See schedule C

Lake Erie